

Intuition 4856

Ochre 1718

Specifications

Contents

55% post-consumer recycled polyester
34% pre-consumer recycled polyester
11% polyester

Weight

11.2 ± 1.0 oz./lin. yd.

Width

54" min. useable

Repeat

none

Treatment

stain repellent

Backing

acrylic backcoating

Treatment

stain repellent

Backing

acrylic backcoating

Cleaning Code

<p>Standard Care Label W-S. Clean with water based cleaning agents, foam or pure, water free solvents. Vacuuming or light brushing is recommended to prevent dust and soil buildup. May also be disinfected with hydrogen peroxide, alcohol, and quaternary ammonium (quat) based cleaners.</p>

Performance



Breaking Strength (ASTM D5034)

210 lbf min. warp and 200 lbf min. fill

Tear (ASTM D2261)

65 lbf min. warp and 55 lbf min. fill

Seam Slippage (ASTM D4034)

30 lbf warp and 45 lbf fill

Pilling resistance (ASTM D3511)

Class 4 min.

Colorfastness to light (AATCC 16.3 Option 3)

Grade 4 min. at 40 hours

Colorfastness to crocking (AATCC 8)

Grade 4 min. dry & Grade 3 min. wet

Wyzenbeek Abrasion resistance (ASTM D4157)

100,000 double rubs cotton duck

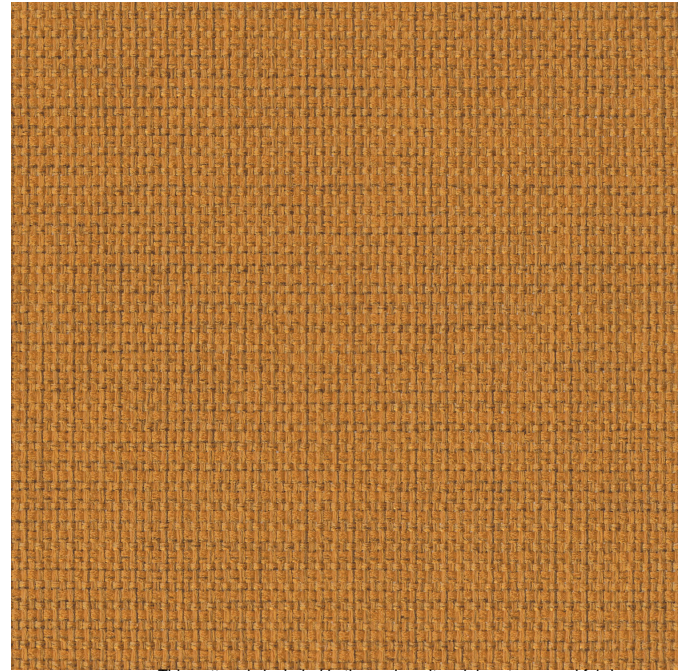
Flammability

CA Technical Bulletin 117-2013 Section 1
ASTM E84 Class I or A

Miscellaneous

Every effort has been made to ensure color accuracy of the digital images, however, please order a sample before specification. Application testing of this product is recommended. Colors may vary between dye lots. This is a directional fabric.

Proudly woven in North America supporting our local communities.



This pattern is included in the underwriters laboratory panel fabric recognition program. Additional testing of this U.L. recognized fabric is not required on approved panels from participating manufacturers.



Guilford of Maine

NRC of anechoic termination

1.00

NRC of fabric in front of anechoic termination

.95

The plot below summarizes impedance tube measurements of absorption of an anechoic termination and various fabrics in front of the anechoic termination.

