

Emerge 2178

Emerald 907

Specifications

Contents

81% post-consumer recycled biodegradable* polyester
19% pre-consumer recycled biodegradable* polyester

Weight

12.4 ± 1.0 oz./lin. yd

Width

54" min. useable

Repeat

12" horizontal | 18.25" vertical

Treatment

none

Backing

none

Cleaning Code

<p>Standard Care Label W-S. Clean with water based cleaning agents, foam or pure, water free solvents.

Vacuuming or light brushing is recommended to prevent dust and soil buildup.

Bleach Cleanable - May be cleaned with a 10% bleach-to-water solution.

Rinse well after cleaning. May also be disinfected with hydrogen peroxide,

alcohol, and quaternary ammonium (quat) based cleaners. Cleaning & Disinfection Handbook</p>

Performance



Breaking Strength (ASTM D5034)

265 lbf min. warp and 286 lbf min. fill

Tear (ASTM D2261)

min. warp and fill

Seam Slippage (ASTM D4034)

108 lbf min. warp and 106 lbf min. fill

Pilling resistance (ASTM D3511)

Class 4 min.

Colorfastness to light (AATCC 16.3 Option 3)

Grade 4.5 min. at 40 hours

Colorfastness to crocking (AATCC 8)

Grade 4 min. dry & Grade 4 min. wet

Wyzenbeek Abrasion resistance (ASTM D4157)

100,000 double rubs min. cotton duck

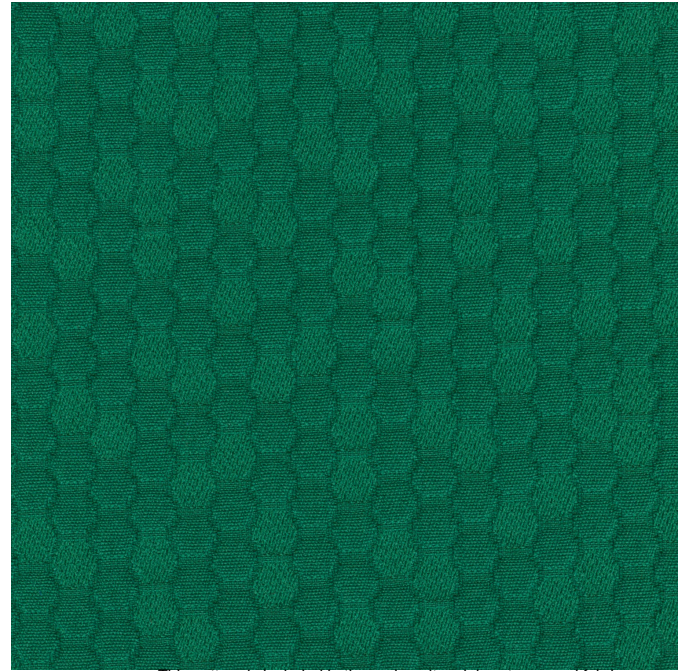
Flammability

CA Technical Bulletin 117-2013 Section 1

NFPA 260-2013 Class I

Miscellaneous

Proudly woven in North America supporting our local communities.



This pattern is included in the underwriters laboratory panel fabric recognition program. Additional testing of this U.L. recognized fabric is not required on approved panels from participating manufacturers.



Guilford of Maine