

# Amaze 2139

Fog 1265

## Specifications

---

### Contents

82% polyester  
18% post-consumer recycled polyester

### Weight

12.9 +/- 1.0 oz./lin. yd.

### Width

66" min. usable

### Repeat

11.7" vertical | 12.8" horizontal  
Random match

### Treatment

### Backing

## Cleaning Code

---

<p>Standard Care Label W-S. Clean with water based cleaning agents, foam or pure, water free solvents. Vacuuming or light brushing is recommended to prevent dust and soil buildup. May also be disinfected with hydrogen peroxide, alcohol, and quaternary ammonium (quat) based cleaners.</p>

## Performance

---



### Breaking Strength (ASTM D5034)

290 lbf min. warp and 230 lbf min. fill

### Tear (ASTM D2261)

15 lbf min. warp and fill

### Colorfastness to light (AATCC 16.3 Option 3)

Grade 4 min. at 40 hours

### Colorfastness to crocking (AATCC 8)

Grade 4 min. dry & Grade 3 min. wet

### Flammability

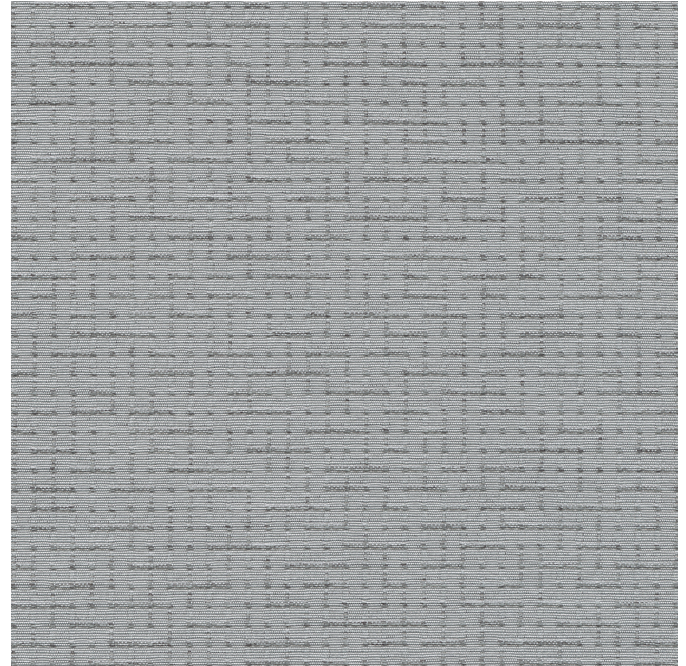
ASTM E84 Class I or A

## Miscellaneous

---

Proudly woven in North America supporting our local communities.

Application testing of this product is recommended. Colors may vary between dye lots. This is a directional fabric.



This pattern is included in the underwriters laboratory panel fabric recognition program. Additional testing of this U.L. recognized fabric is not required on approved panels from participating manufacturers.