

# Dashing 1204

Dapper Grey 1047

## Specifications

### Contents

92% post-consumer recycled polyester  
8% pre-consumer recycled polyester

### Weight

10.9 ± 1.0 oz./lin. yd.

### Width

66" min. useable

### Repeat

2" vertical | 2.4" horizontal  
Random match

### Treatment

none

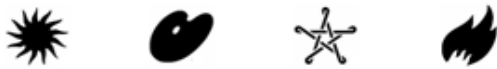
### Backing

none

## Cleaning Code

<p>Standard Care Label W-S. Clean with water based cleaning agents, foam or pure, water free solvents. Vacuuming or light brushing is recommended to prevent dust and soil buildup. May also be disinfected with hydrogen peroxide, alcohol, and quaternary ammonium (quat) based cleaners.</p>

## Performance



### Breaking Strength (ASTM D5034)

240 lbf min. warp and 190 lbf min. fill

### Tear (ASTM D2261)

25 lbf min. warp and 40 lbf min. fill

### Colorfastness to light (AATCC 16.3 Option 3)

Grade 4 min. at 40 hours

### Colorfastness to crocking (AATCC 8)

Grade 4 min. dry & Grade 3 min. wet

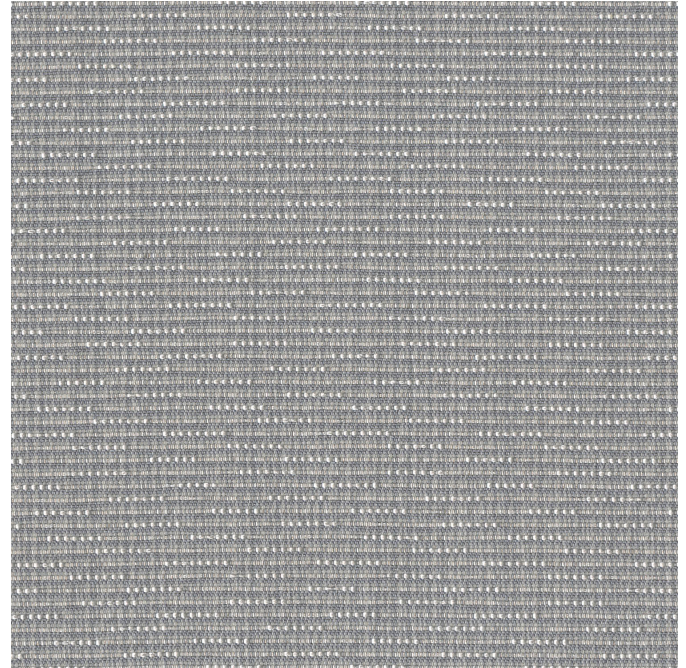
### Flammability

ASTM E84 Class I or A

## Miscellaneous

Proudly woven in North America supporting our local communities.

Application testing of this product is recommended. Colors may vary between dye lots. This is a directional fabric.



TerrateX is a registered trademark of Duvaltex and designates fabrics that are made from 100% recycled or compostable material using increasingly sustainable manufacturing practices to produce a high quality product that is recyclable at the end of its useful life.



This pattern is included in the underwriters laboratory panel fabric recognition program. Additional testing of this U.L. recognized fabric is not required on approved panels from participating manufacturers.